

State of Wyoming Corner Record

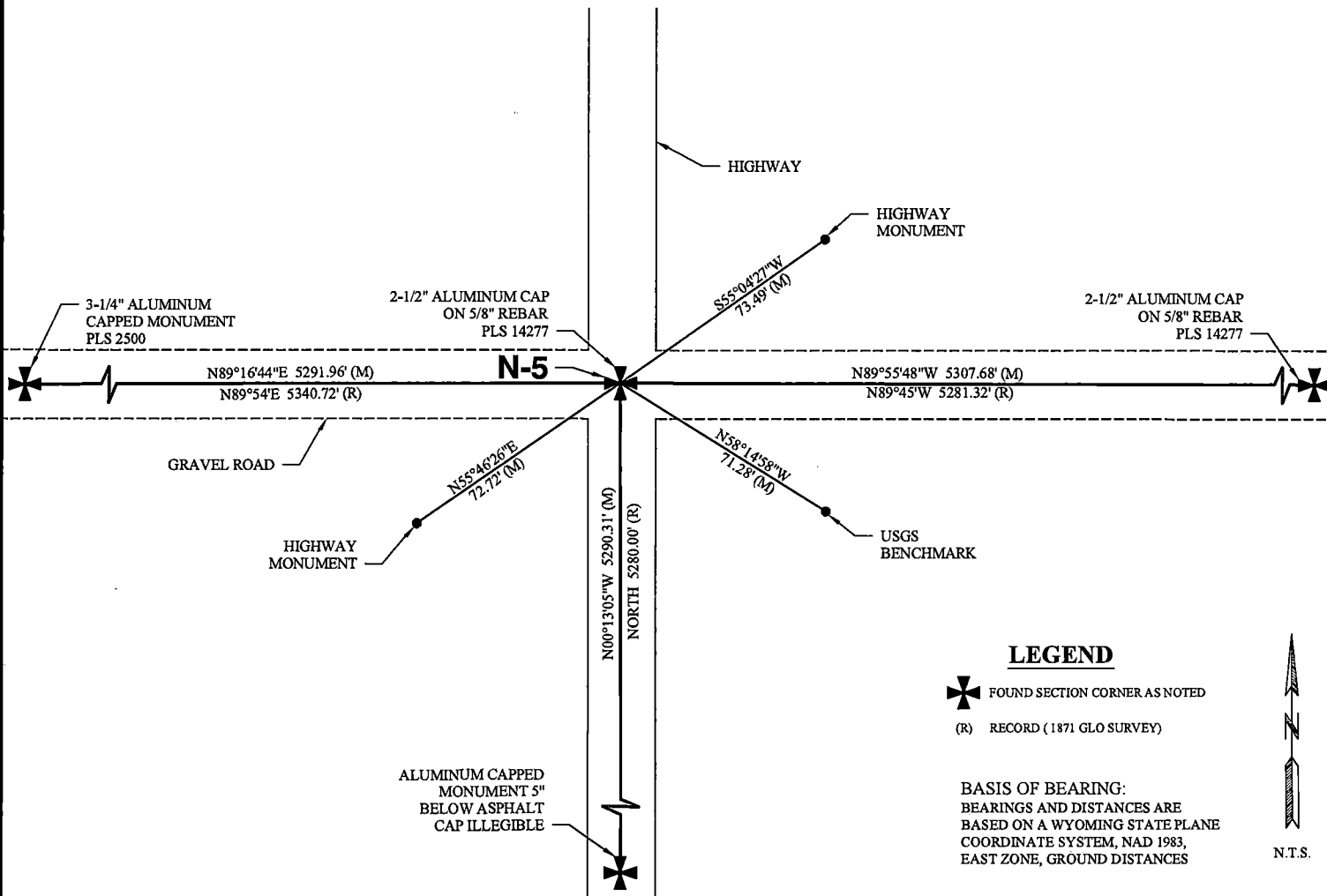
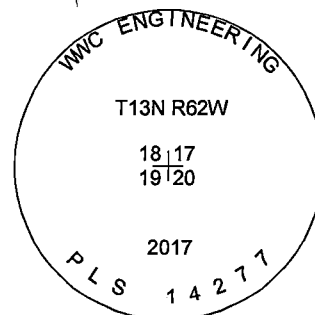
(In compliance with the CORNER PERPETUATION AND FILING ACT, Wyoming Statutes, 1997, Section 33-29-140, et seq., and the Rules and Regulations of the Board of Registration for Professional Engineers and Professional Land Surveyors)

Reverse side of this form may be used if more space is needed.

Record of original survey and citation of source of historical information (if corner is lost or obliterated.) Description of corner monumentation evidence found and/or monument and accessories established to perpetuate the location of this corner. Sketch of relative location of monument, accessories, and reference points with course and distance to adjacent corner(s) (if determined in this survey). Method and rationale for reestablishment of lost or obliterated corner.

EVIDENCE RECORD: 1871 GLO Survey: North between sections 19 & 20, 80.00 chains. Set sand stone 20"x11"x7" for corner of sections 17, 18, 19 and 20.

EVIDENCE FOUND: June 2017: Sand stone from 1871 GLO survey not found. Accepted intersection of north-south highway and east-west gravel road for corner of sections 17, 18, 19 and 20. Set a 2 1/2" aluminum cap marked as shown on a 5/8" rebar, 24" long, 1" below asphalt road surface.



Date of Field Work: June 08, 2017

Office Reference: 2017-135

CROSS INDEX DIAGRAM

	1	2	3	4	5	6	7	8	9	10	11	12	13	14	15	16	17	18	19	20	21	22	23	24	25	
A																										A
B																										B
C		6			5				4					3					2						1	C
D																										D
E																										E
F																										F
G			7				8							9					10						11	G
H																										H
J																										J
K																										K
L				18											17										16	L
M																										M
N																										N
O																										O
P																										P
Q																										Q
R																										R
S																										S
T																										T
U																										U
V																										V
W																										W
X																										X
Y																										Y
Z																										Z

Land Surveyor / Firm / Address

Dirk Thompson

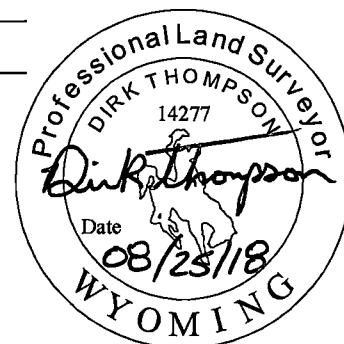
WWC Engineering

1849 Terra Avenue

Sheridan, WY 82801

Telephone: (307) 672-0761

This corner record was prepared by me or under my direction and supervision.
SEAL & SIGNATURE



REC# #: 739882

RECORDED 10/1/2018 AT 1:32 PM BK# 2598 PG# 316
Debra K. Lee, CLERK OF LARAMIE COUNTY, WY. PAGE 1 OF 1

Corner Name: Northeast Corner
SBRPEPLS/PLSW: March 1994; PLSW January 1998

Section: 19 T 13N R 62W ; 6TH P.M. Cross-Index No.: N-5